

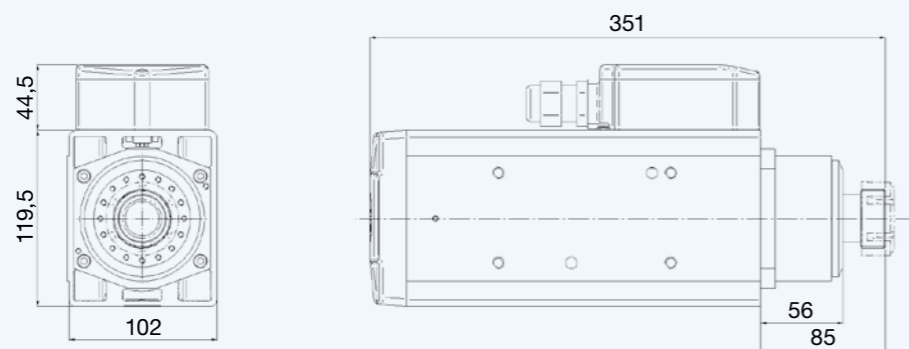
# MULTITECH QN



SUITABLE FOR MACHINING WOOD AND ALUMINUM  
AVAILABLE WITH ELECTROFAN, COMPRESSED AIR AND SHAFT-POWERED FAN COOLING  
AVAILABLE WITH CERAMIC BEARINGS AVAILABLE WITH ER 32 AND HSK 40C

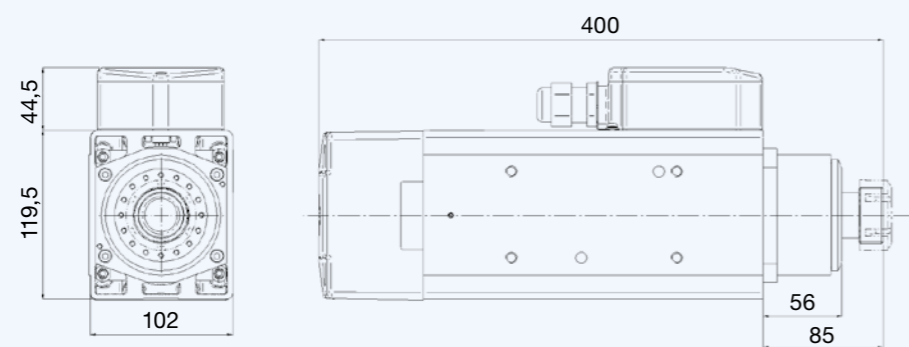
## LAYOUT ER 32 DX

## COOLING BY SHAFT - DRIVEN FAN



## LAYOUT ER 32 DX

## ELECTROFAN COOLING



L tot

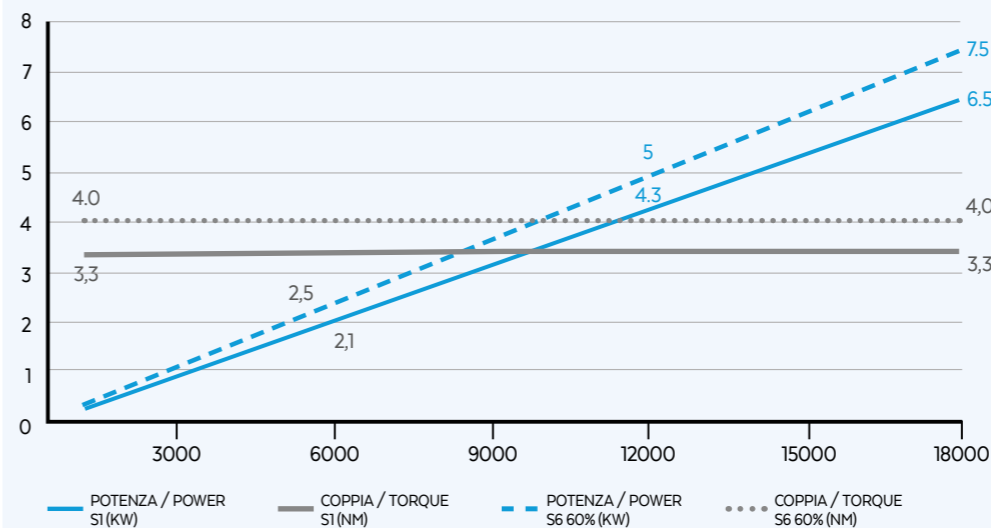
356 mm

Aria compressa / Compressed air

## QN-1 6.5/18 18 BT

## COOLING BY SHAFT-DRIVEN FAN

### PRESTAZIONI / PERFORMANCES



### OPZIONALI / OPTIONS

- HSK 40C
- COMPRESSED AIR Compressed air cooling
- Electrofan cooling



### SPECIFICHE TECNICHE / TECHNICAL SPECIFICATIONS

- S1-S6 kW 6.5/7.5
- S1-S6 A 13/15
- Pol es 2
- S1-S6 Nm 3.3/4
- Volt 220/380
- Supply inverter
- rpm 18000
- kg 14

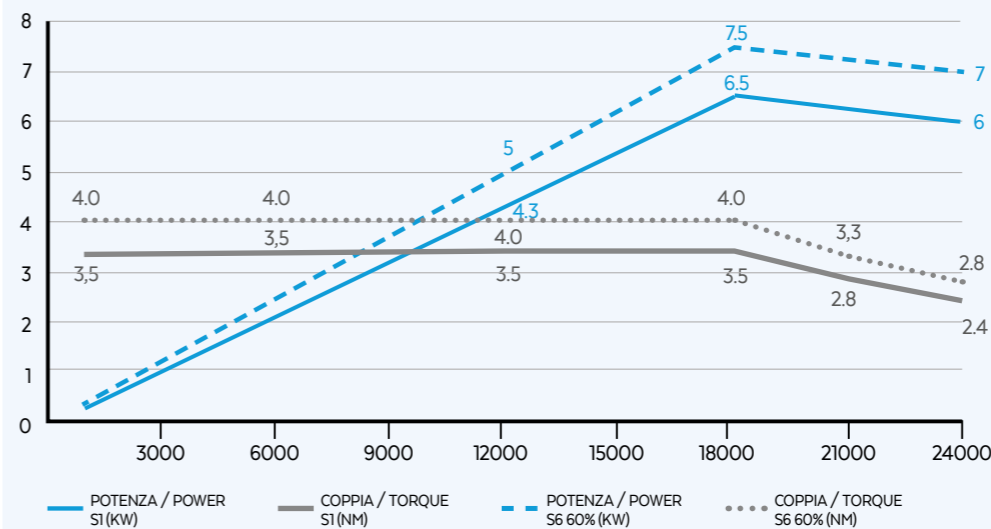
### EQUIPAGGIAMENTO / EQUIPMENT

- ER32DX
- cooling by shaft-driven fan
- Manual tool change (M.T.C)
- Grease lubrication
- Steel bearings

## QN-1F 6.5/18 24 BT

## ELECTROFAN COOLING

### PRESTAZIONI / PERFORMANCES



### OPZIONALI / OPTIONS

- HSK 40C
- COMPRESSED AIR Compressed air cooling



### SPECIFICHE TECNICHE / TECHNICAL SPECIFICATIONS

- S1-S6 kW 6.5/7.5
- S1-S6 A 13/15
- Pol es 2
- S1-S6 Nm 3.5/4
- Volt 220/380
- Supply inverter
- rpm 24000
- kg 14

### EQUIPAGGIAMENTO / EQUIPMENT

- ER32DX
- Electrofan cooling
- Manual tool change (M.T.C)
- Grease lubrication
- Ceramic ball bearings

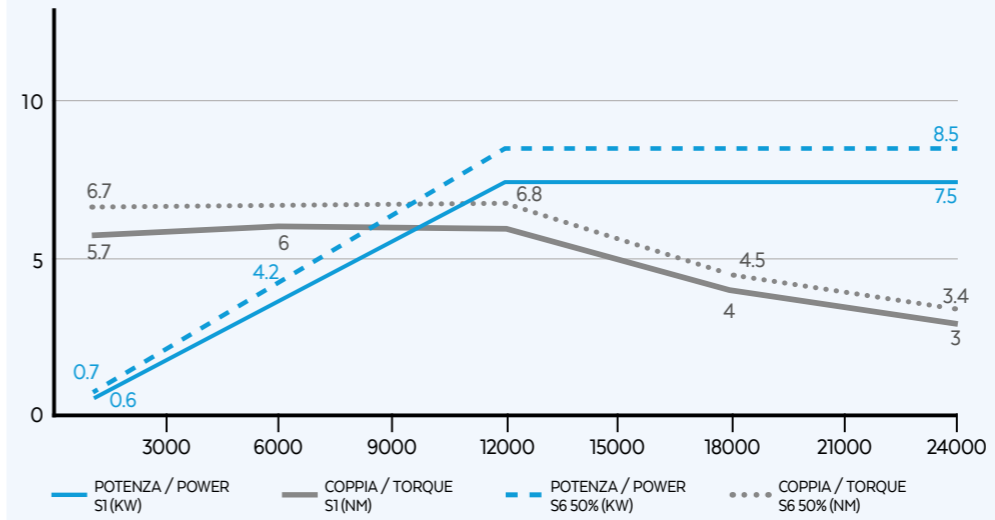
# MULTITECH MA



SUITABLE FOR MACHINING LATEST MATERIALS IN DUST ENVIRONMENTS  
EASY ASSEMBLING ON BIROTARY HEADS  
VERY EFFICIENT COMPRESSED AIR COOLING  
AVAILABLE WITH ER 32

MA-1C 7.5/12 24

PRESTAZIONI / PERFORMANCES



SPECIFICHE TECNICHE / TECHNICAL SPECIFICATIONS

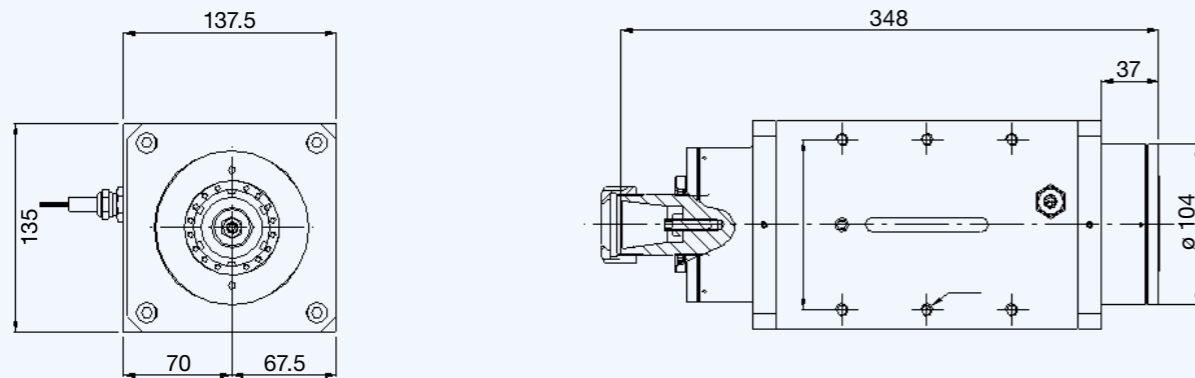
- S1-S6 kW 7.5/8.5
- S1-S6 A 16/17
- Pol es 4
- S1-S6 Nm 6/6.8
- Volt 380
- Supply inverter
- rpm 24000
- kg 22

EQUIPAGGIAMENTO / EQUIPMENT

- ER 32DX/SX COMPRESSED AIR Compressed air cooling
- Manual tool change (M.T.C)
- Ceramic ball bearings
- Labyrinth with air seal
- Grease lubrication

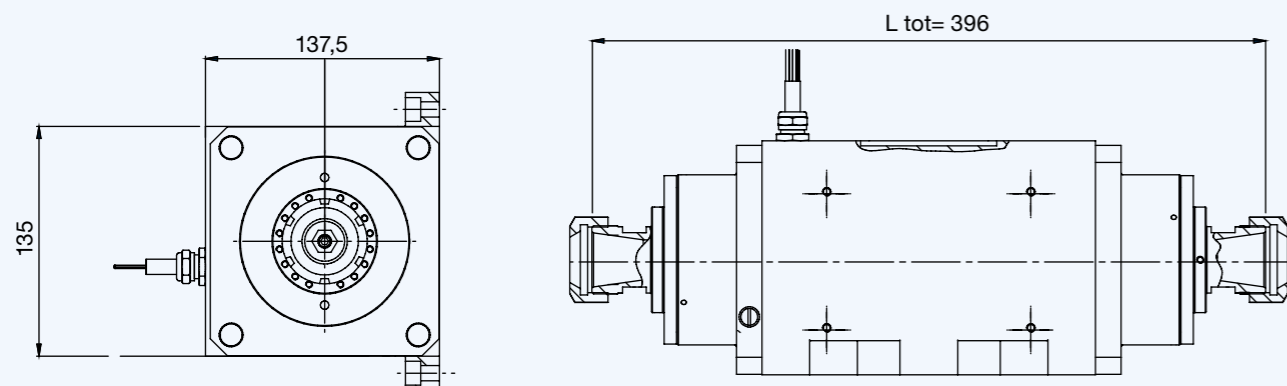
LAYOUT ER32 DX

1 END



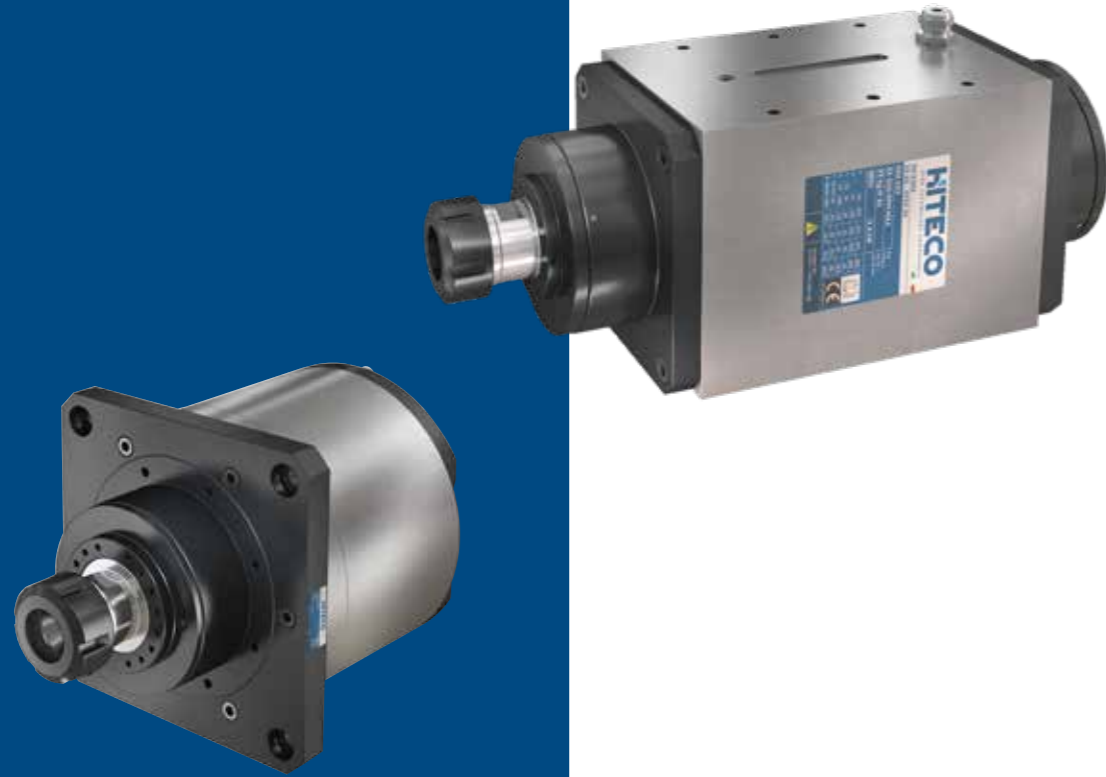
LAYOUT ER32 DX-SX

2 ENDS



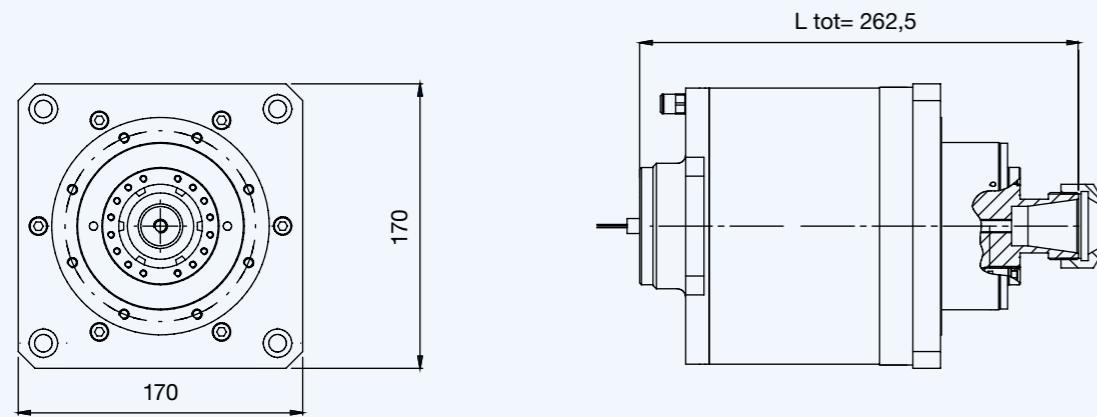
# MULTITECH ML

SUITABLE FOR MACHINING LATEST MATERIALS IN DUST ENVIRONMENTS  
EASY ASSEMBLING ON BIROTARY HEADS  
VERY EFFICIENT COMPRESSED AIR COOLING  
AVAILABLE WITH ER 32 AND ER 40



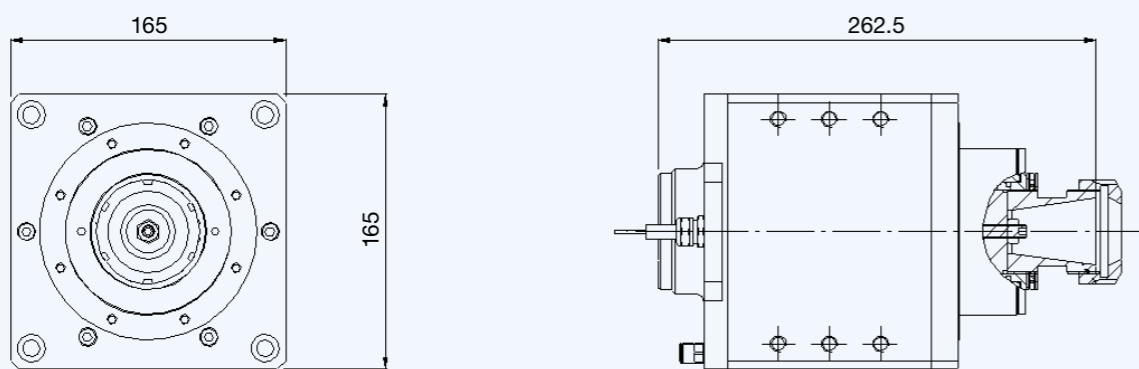
LAYOUT ER32 DX

1 END



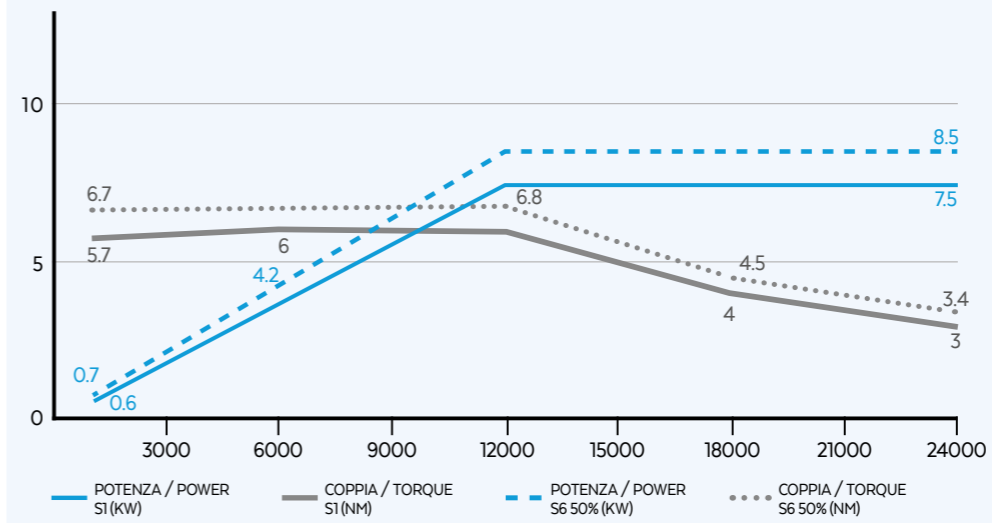
LAYOUT ER32 DX

1 END



## ML-1C 7.5/12 24

### PRESTAZIONI / PERFORMANCES



### OPZIONALI / OPTIONS



### SPECIFICHE TECNICHE / TECHNICAL SPECIFICATIONS

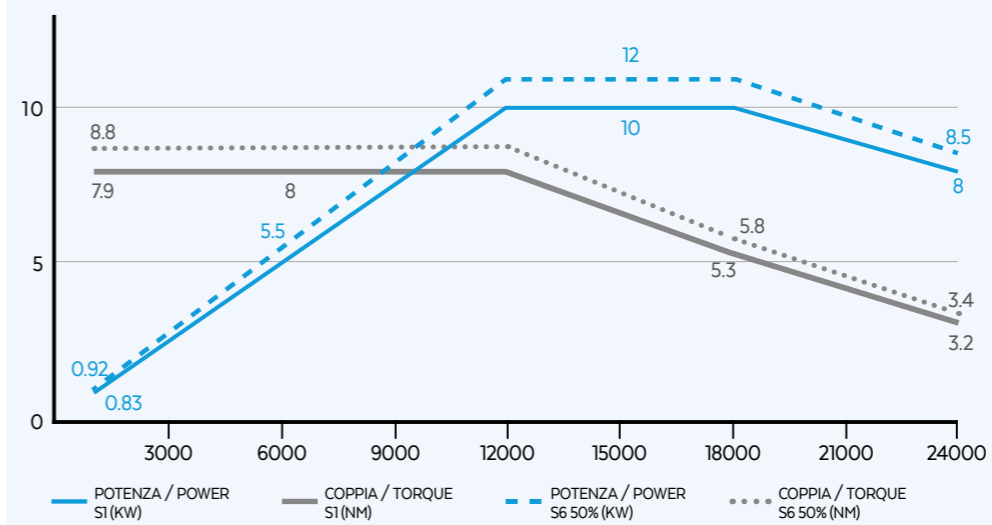
**S1-S6 kW** 7.5/8.5  
**S1-S6 Nm** 6/6.8  
**rpm** 24000  
**S1-S6 A** 16/17  
**Volt** 380  
**kg** 22  
**Pol es** 4  
**Supply** inverter

### EQUIPAGGIAMENTO / EQUIPMENT

**ER 32 DX**  
**COMPRESSED AIR** Compressed air cooling  
**Manual tool change (M.T.C.)**  
**Ceramic ball bearings**  
**Labyrinth with air seal**  
**Grease lubrication**

## ML-1C 10/12 24

### PRESTAZIONI / PERFORMANCES



### OPZIONALI / OPTIONS



### SPECIFICHE TECNICHE / TECHNICAL SPECIFICATIONS

**S1-S6 kW** 10/10.5  
**S1-S6 Nm** 8/8.8  
**rpm** 24000  
**S1-S6 A** 21.3/22  
**Volt** 380  
**kg** 22  
**Pol es** 4  
**Supply** inverter

### EQUIPAGGIAMENTO / EQUIPMENT

**ER 32 DX**  
**COMPRESSED AIR** Compressed air cooling  
**Manual tool change (M.T.C.)**  
**Ceramic ball bearings**  
**Labyrinth with air seal**  
**Grease lubrication**