

Solution for  
**RAM and  
COMPLETE RANGE**



## Company PROFILE

ITALY

Taylor-made



**IMA TECNO** was founded in the year 2000 and immediately became a leading Company in the world of **mechanical components for machine tools**.

In a short time it has established itself as a reliable and accurate reality, manufacturer of components with a high technological content in main sectors such as **automotive, aerospace, energy, precision engineering**.

In recent years, **IMA TECNO's** business environment has grown a lot, both in terms of technology applied to the product, and in terms of **technical skills** achieved, necessarily resulting in new application solutions and tailored to **specific Customer needs**.

The real levers that have made us progress and achieve the awareness to be able to provide added value to all our components is the constant view towards the future and technological innovation.

This spirit has allowed us to offer a high degree of operational flexibility in producing **high quality products** and on specific Customer needs.

In fact, thanks to the production experience acquired and the high specialization of our technical staff we provide the best technological solutions with a complete assistance.

Fundamental for the company is its **Service department**, initially created for the needs of assistance on its own products, over the years it has refined its experience to guarantee a multi-brand service on every type of spindle and electro-spindle.

# RAM Solution

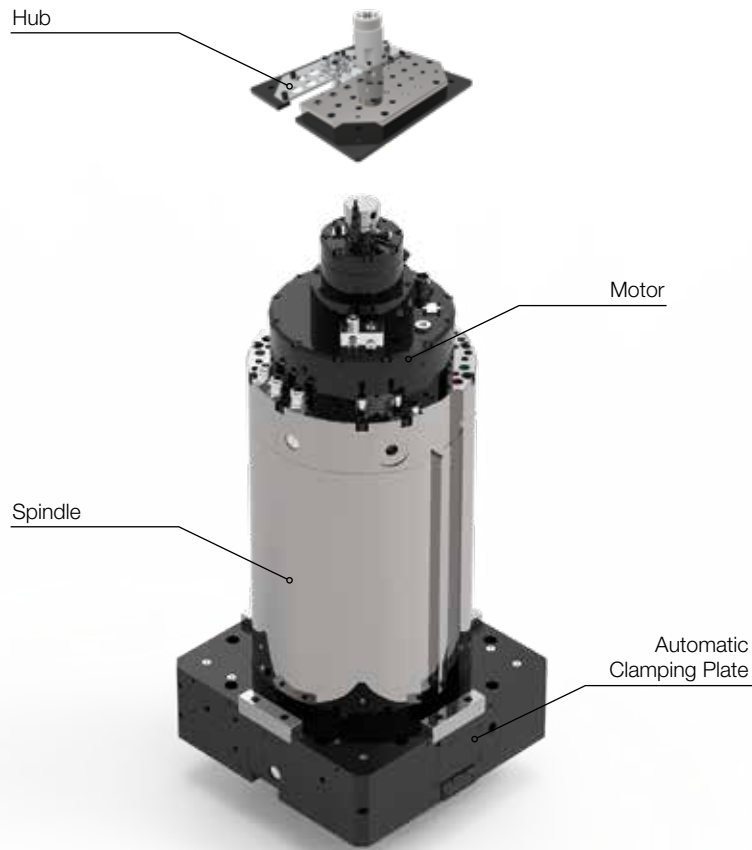
# RTS solutions

power  
**up to 120**  
kW

torque  
**up to 1.500**  
Nm

speed  
**up to 15.000**  
rpm

Various  
**accessories**  
interface



Fork Head



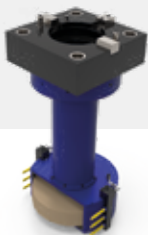
90° Extension Head



90° Head



Milling Cover



Grinding Extension



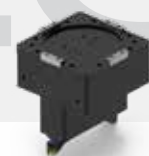
Grinding Extension Head



Milling Tool



Automatic Turning Block



Fixed Turning Block

TOOLS

Hub



power  
**35>110**  
kW

max torque  
**1000>7000**  
Nm

max speed  
**8000>3500**  
rpm

Motor  
gearbox  
spindle  
**4-size**

Shifting  
gearbox  
**i = 1**  
**i = 5**

Various  
**accessories**  
interface

Motor

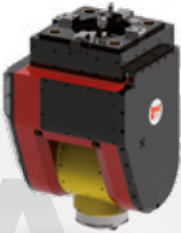
Gearbox

Spindle

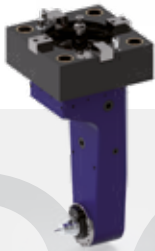
Automatic  
Clamping Plate



Fork Head



90° Extension Head



Y Axis



Turning Tool

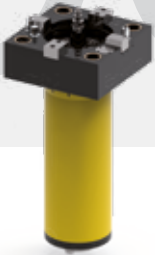


ACCESS

Grinding Head



Extension Head



Milling Tool



90° Head ATC



90° Index Head



# COMPLETE Range

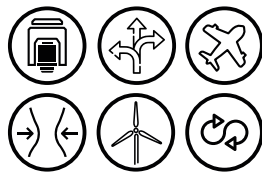
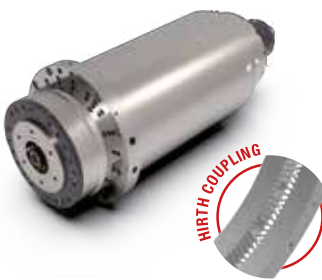
## AEROSPACE line



## DW line



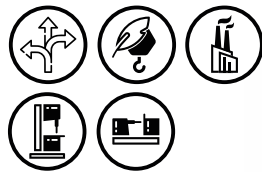
## MILLING/TURNING



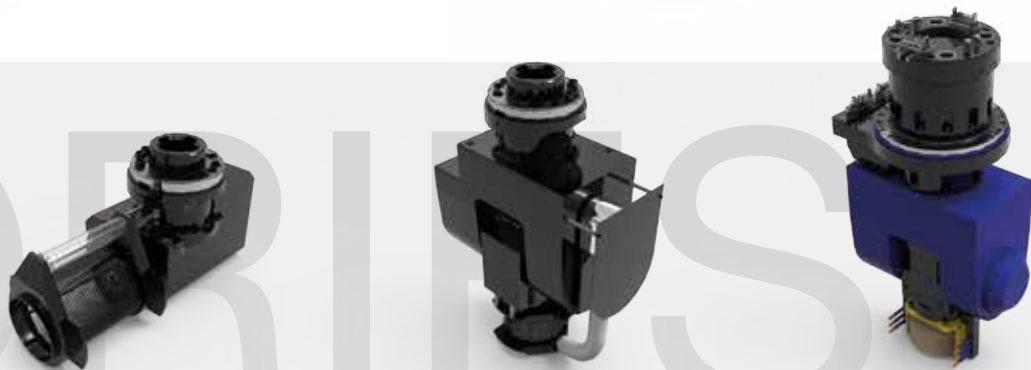
## TURNING



## MOTOR DRIVE

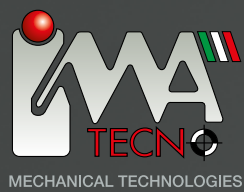


## GRINDING



## HEADS

- |                           |                             |                      |                         |             |                        |                 |              |                |             |
|---------------------------|-----------------------------|----------------------|-------------------------|-------------|------------------------|-----------------|--------------|----------------|-------------|
| Robotics                  | Wheel Alloy                 | Quality Price        | Compactness             | Drilling    | High Productivity      | Ti/Al Machining | Automotive   | Two Axis Heads | Flexibility |
| Vertical Machining Center | Horizontal Machining Center | Oil/gas Applications | Industrial Applications | Wind Energy | High Power High Torque | Atc             | Industry 4.0 | Grinding Wheel | Aerospace   |



IMA TECNO S.R.L.

HEADQUARTERS

VIA DELLE INDUSTRIE N.°1

WAREHOUSE

VIA DELL' ARTIGIANATO N.°4

20851 LISSONE (MB) - ITALY

+39 039 2454524



**EXPLORE OUR  
PRODUCT LINES**

